

**ASSIGNMENT 2 Greyscale Collage**

This assignment is designed to increase your understanding of and appreciation for value and greyscale. By creating a gradation study you will begin to understand the number of shades between black and white and how to move from one value to another without jumping values. You want to find grays through either solid color or by use of typography or pattern.

**GOAL**

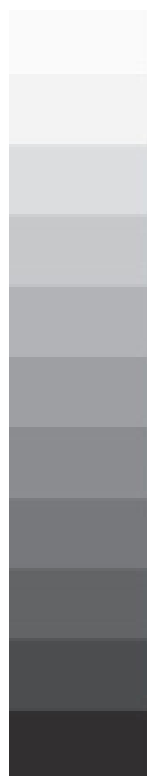
This is a hands on assignment. You will create a single gradation study using cut out or torn peices of magazine or newspaper. The example on the class web page shows that there is no color involved just black, white, and all the values you can see in between.

**PROCESS**

- 1) Cut a piece of foam core 11 x 4"
- 2) Tear or cut pieces of printed paper from magazines or newspapers
- 3) pieces should be no more than 1 inch in any direction
- 4) Start with black at the bottom and move towards white at the top
- 5) Try to incorporate all the values you can between black and white and when you get to the top, your image should be white.
- 6) Arrange all your pieces of paper first, then glue them down once you have determined that the value scale is even and incorporates all the values between black and white.
- 7) When you're done, take a photo of your assignment and email it to me before the start of class.

**USE THIS VALUE SCALE (ON THE LEFT) TO GUIDE YOU IN YOUR ASSIGNMENT**

This is your value scale.



This is an example of how typography can be used to create a value scale.

\*This is just an example, you are not required to use typography\*



Color Theory  
Instructor: Lauren Addario  
Email: lladdario@nmhu.edu

ASSIGNMENT 2  
DUE January 25

All assignments are due  
at the start of class.

**YOUR ASSIGNMENT WILL BE ASSESSED USING THE FOLLOWING CRITERIA**

Did you move through the value scale equally, without skipping values?  
/25 points

Do you have the values in order from light to dark?  
/25 points

Did you use pieces of paper that were no larger than 1 inch in any direction?  
/25

How is the overall care and craft of the project?  
/25

**TOTAL 100 POINTS**